

# World Manufacturing Production in May 2020

This monthly overview describes the current situation of the manufacturing sector based on preliminary and seasonally adjusted data. Therefore, UNIDO Statistics Division regularly collects index numbers of industrial production (base year 2015), whereas data coverage is limited due to data availability. The most recent monthly data are available on the UNIDO Statistics data portal<sup>1</sup>.

Figure 1: Index of world manufacturing output for specific regions (base 2015)

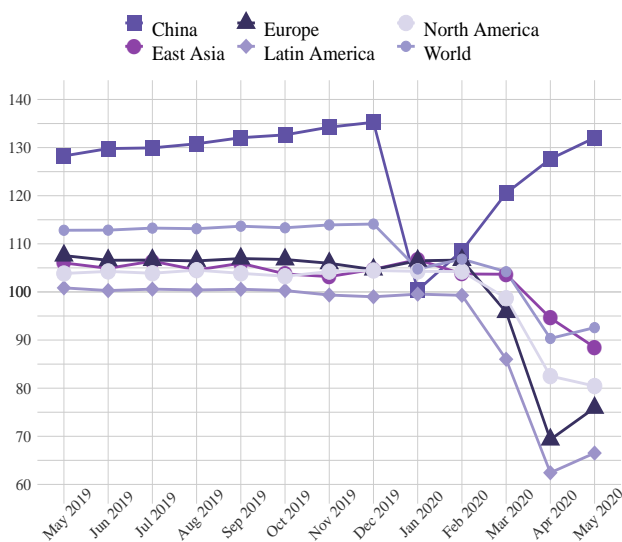
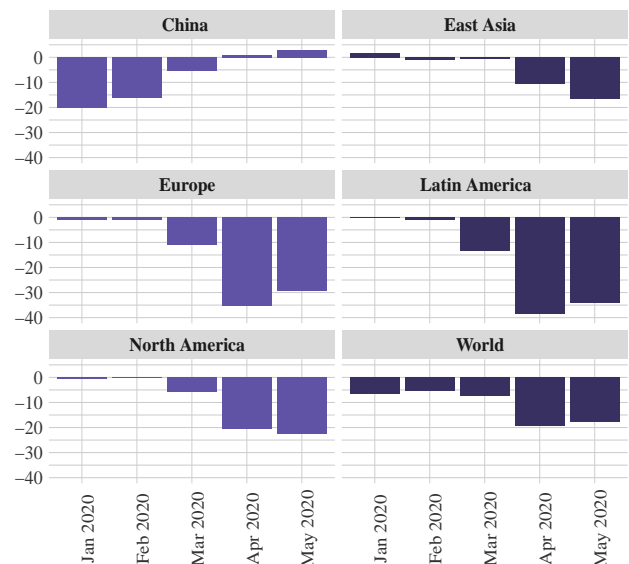


Figure 2: Growth of manufacturing output of specific regions, in % compared to the same period of the previous year



Aggregated data for the country groups North America, East Asia, Europe, Latin America as well as China show the ongoing economic situation in the most recent months. Figure 1 and table 1 (see page 4) show the actual index values with the current base year 2015 from 2019 onwards. Figure 2 gives further details on year-over-year growth rates of the last five months, whereas figure 3 focuses on the current situation per industry group for the aggregates World, Industrialized Countries as well as China.

<sup>1</sup><https://stat.unido.org/database/Monthly%20IIP>

Figure 3: Estimated growth by industry in % compared to the same period of the previous year, May 2020

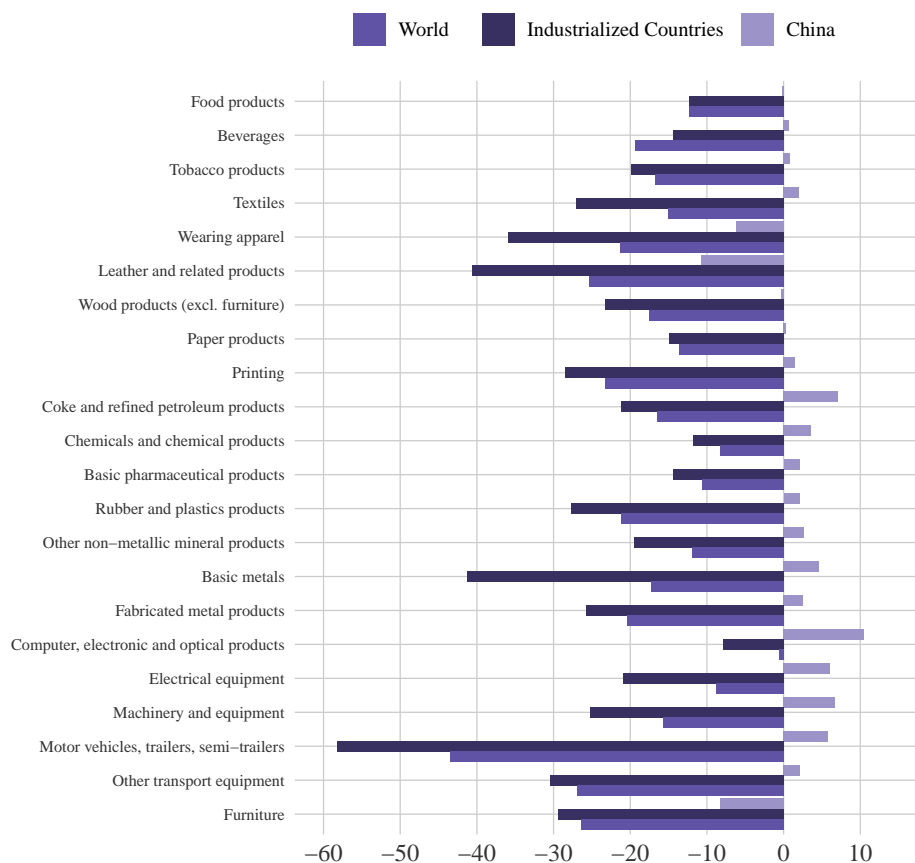


Figure 4 and figure 5 are focusing on countries with a high contribution on world manufacturing outcome as well as ongoing economic uncertainties due to the pandemic outbreak in the beginning of 2020. While figure 4 depicts the year-over-year growth rates of the last 4 months of specific industrialized countries, figure 5 shows the corresponding results of selected developing or emerging industrial economies.

Figure 4: Growth of manufacturing output for specific industrialised countries in % compared to the same period of the previous year

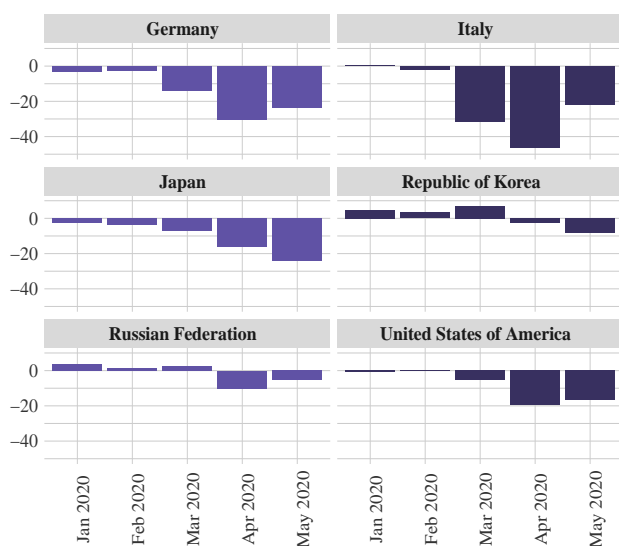
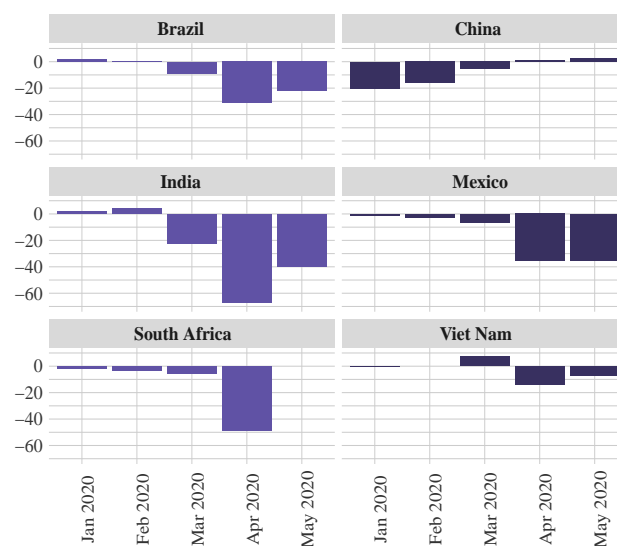


Figure 5: Growth of manufacturing output for specific developing and emerging countries in % compared to the same period of the previous year



Methodological note: Preliminary index numbers (base 2015) are derived from national statistical sources. UNIDO conducts seasonal adjustment where necessary and appropriate. The aggregates for country groups are calculated with weights referring to the base year 2015. Due to data availability, the aggregate of world manufacturing output considers around 40 countries and a share of approximately 80 per cent. Information on the methodology of index numbers, estimation procedures or a compilation of country groups' indices can be found in a methodological document<sup>2</sup> and on the website<sup>3</sup>. Quarterly indices are also published regularly in UNIDO's Quarterly<sup>4</sup> IIP database.

<sup>2</sup><https://stat.unido.org/content/publications/world-manufacturing-production%253a-methodology-of-the-quarterly-report>

<sup>3</sup><https://stat.unido.org/content/learning-center/seasonal-adjustment>

<sup>4</sup><https://stat.unido.org/database/Quarterly%20IIP>

**Table 1**

**Estimated index of output by specific country groups (Base 2015 = 100)**

	China	East Asia	Europe	Latin America	North America	World
Jan 2019	125.9	105.0	107.4	99.6	105.1	112.1
Feb 2019	129.4	104.7	107.9	100.3	104.5	113.1
Mar 2019	127.4	104.2	107.8	99.4	104.5	112.5
Apr 2019	126.5	105.6	107.1	101.6	103.6	112.2
May 2019	128.3	106.0	107.6	100.8	103.8	112.8
Jun 2019	129.8	104.9	106.6	100.3	104.3	112.8
Jul 2019	129.9	106.4	106.6	100.6	103.9	113.3
Aug 2019	130.8	104.6	106.5	100.4	104.5	113.1
Sep 2019	132.1	106.0	106.9	100.6	103.9	113.7
Oct 2019	132.6	103.8	106.7	100.3	103.3	113.3
Nov 2019	134.2	103.2	106.0	99.4	104.2	113.9
Dec 2019	135.2	104.7	104.6	99.0	104.5	114.1
Jan 2020	100.4	106.7	106.5	99.5	104.3	104.8
Feb 2020	108.6	103.7	106.6	99.3	104.2	106.8
Mar 2020	120.5	103.7	95.8	86.0	98.7	104.2
Apr 2020	127.6	94.6	69.3	62.4	82.5	90.3
May 2020	132.0	88.5	75.9	66.5	80.4	92.6

Source: UNIDO Statistics

Note: Seasonally adjusted data